




# FOOD PROCESSING MAINTENANCE SOLUTIONS WITH **DETEX**



| LUBRICANT/<br>PENETRANTS                | NSF®<br>RATING  | NSF® # | CONTAINER | PART# |
|---|---|--------|-----------|-------|
| FOOD GRADE MACHINE &<br>PENETRATING OIL |  | 129000 | AEROSOL   | 01316 |
| FOOD GRADE SILICONE<br>LUBRICANT        |   | 113815 | AEROSOL   | 01716 |
| FOOD GRADE<br>CHAIN LUBRICANT           |   | 132899 | AEROSOL   | 06016 |
| HEAVY-DUTY SILICONE<br>LUBRICANT        |   | 059820 | AEROSOL   | 51516 |
| FOODLUBE SUGAR<br>DISSOLVING FLUID      |   | 147495 | AEROSOL   | 57716 |
|   |   | 147492 | TRIGGER   | 57728 |
|   |   |        | CONTAINER | 57701 |

| ELECTRONIC CLEANER            | NSF®<br>RATING | NSF® # | CONTAINER | PART# |
|-------------------------------|----------------|--------|-----------|-------|
| FOOD GRADE ELECTRONIC CLEANER |                | 154685 | AEROSOL   | 58116 |

| GREASES                             | NSF®<br>RATING | NSF® # | CONTAINER | PART# |
|-------------------------------------|----------------|--------|-----------|-------|
| CLEAR PENETRATING GREASE            |                | 143804 | AEROSOL   | 06716 |
| THERMAPLEX® FOODLUBE BEARING GREASE |                | 117848 | CARTRIDGE | 70114 |

| SPECIALTY MRO               | NSF®<br>RATING | NSF® # | CONTAINER | PART# |
|-----------------------------|----------------|--------|-----------|-------|
| BELT DRESSING               |                | 134508 | AEROSOL   | 02216 |
| DETEX® SCOURING PAD*        | N/A            |        | PAD       | 59660 |
| DETEX® EMPTY TRIGGER BOTTLE | N/A            |        | TRIGGER   | 57928 |

\*Patent-Pending

|  | NSF® CATEGORY CODE                |    |
|---|-----------------------------------|----|
|   | H1                                | P1 |
|   | SAFE: For use throughout facility |    |
| INCIDENTAL FOOD CONTACT   |                                   |    |



**CONTACT YOUR ITW PRO BRANDS REPRESENTATIVE TODAY!**

800.241.8334 | [www.ITWProBrands.com](http://www.ITWProBrands.com)

WEB SITE: <http://recalldefense.lpslabs.com/index>

©2019 ITW Pro Brands • LPS®, ThermaPlex® and DETEX® are registered trademarks of Illinois Tool Works • Printed in U.S.A. • All Rights Reserved • LI012 • 190917

Scan to see  
DETEX® in action!





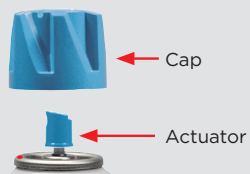
## DETECTABLE COMPONENTS

DETEX® technology helps reduce the risk of foreign object contamination which can result in contaminated product, facility downtime, delayed customer deliveries and compromised brand reputation.

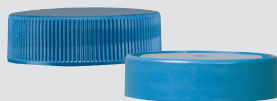
### AEROSOL, TRIGGER SPRAYER, CONTAINER CAPS

Utilizing a unique patented formula, our DETEX® plastic components are both metal & X-ray detectable. Their bright blue color also helps provide added visibility within the plant.

#### AEROSOL



#### CONTAINER CAPS (BOTTLE/CARTRIDGE)



| WHOLE COMPONENT       | DRY MODE | WET MODE |
|-----------------------|----------|----------|
| <b>AEROSOL</b>        |          |          |
| Actuator              | 2.2 mm   | 2.5 mm   |
| Cap                   | 3.0 mm   | > 3.0 mm |
| <b>CONTAINER CAPS</b> |          |          |
| Cap + Metal Liner     | > 3.0 mm | > 3.0 mm |
| Cap Only              | > 3.0 mm | > 3.0 mm |
| Liner Only            | > 3.0 mm | > 3.0 mm |

#### TRIGGER SPRAYER



| WHOLE COMPONENT        | DRY MODE | WET MODE |
|------------------------|----------|----------|
| <b>TRIGGER SPRAYER</b> |          |          |
| Whole Sprayer          | > 3.0 mm | > 3.0 mm |
| Body                   | > 3.0 mm | > 3.0 mm |
| Trigger                | > 3.0 mm | > 3.0 mm |
| Closure                | > 3.0 mm | > 3.0 mm |
| Metal Pin              | 2.5 mm   | > 3.0 mm |
| Nozzle                 | 2.5 mm   | > 3.0 mm |
| Piston                 | 2.0 mm   | 2.5 mm   |

U.S. PATENT NO. 8,980,982 B2 & U.S. PATENT NO. 9,557,311 B2

| FEATURES  | BENEFITS   |
|---|--|
| <b>Detectable:</b> All plastic components are both metal & x-ray detectable and are capable of detection by most detection equipment. | <ul style="list-style-type: none"><li>Reduce concerns of food product contamination</li><li>Assists with a facilities HACCP requirements</li></ul>                         |
| <b>Visible:</b> Blue Color stands out from foods processed at facility  | <ul style="list-style-type: none"><li>Easily identifies items as a non-food object</li><li>Helps visually identify foreign objects before end-of-line detection.</li></ul> |
| <b>NSF-Category Product Labeling:</b> LPS® food safe maintenance chemicals have prominently displayed NSF® category labeling.         | <ul style="list-style-type: none"><li>Distinct labeling helps to prevent use of non NSF® approved LPS® products in the food processing area.</li></ul>                     |
| <b>GRAS Listed:</b> All DETEX® plastic component ingredients are (Generally Recognized As Safe - FDA 21 C.F.R. Sections 177 and 178). | <ul style="list-style-type: none"><li>Meets FDA requirements as an acceptable material for use in food processing plants.</li></ul>  |
| <b>Aerosol Can Compliance:</b> With the Food Safety Net Services (FSNS). FDA 21 C.F.R.175.300, 1935/2004/EC.                          | <ul style="list-style-type: none"><li>Aerosol can does not contain: Heavy metals, BADGE, BFDGE, NOGE, and Bisphenol-A (BPA).</li></ul>                                     |

### SCOURING PAD

DETEX® technology has now been brought to the professional scouring pad category. It's metal detectable and provides the durability and cleaning effectiveness expected in demanding food processing environments.



| PARTIAL COMPONENT                    | DRY MODE | WET MODE |
|--------------------------------------|----------|----------|
| 1" x 1" Piece<br>(25.4 mm x 25.4 mm) | > 3.0 mm | > 3.0 mm |

| FEATURES   | BENEFITS   |
|--|--|
| <b>Detectable:</b> Metal particles are bonded within the blue resin and capable of detection by most metal detection equipment.* | <ul style="list-style-type: none"><li>Reduces the risk of foreign object contamination and expense</li><li>Supports a facility's HACCP Food Safety Program</li></ul>             |
| <b>Visible:</b> Blue color stands out from foods processed at facility   | <ul style="list-style-type: none"><li>Easily identifies scouring pad as a non-food object</li><li>Helps visually identify foreign objects before end-of-line detection</li></ul> |
| <b>Effective:</b> Encapsulated abrasive particles uniformly coat pad fibers  | <ul style="list-style-type: none"><li>Consistently cleans surfaces quickly and safely</li></ul>  |
| <b>Durable:</b> Resin bonded nylon 6 - 6 fibers  | <ul style="list-style-type: none"><li>Withstands harsh food processing environments and resists fraying</li></ul>  |

PATENT-PENDING

\*Not X-ray detectable

### NOTE

- Detection limits for a particular machine depend on a variety of factors including line speed, contaminant placement and orientation, iron fortification (i.e.; flour), wet mode vs. dry mode, fragment size, aperture size, etc. It is the responsibility of the end-user to determine the detection limits of the appropriate DETEX® component for the individual line set up and for the particular food product being inspected.
- Metal and X-ray detection limits for plastic components (above) are based on whole components. Partial plastic and scouring pad components may not be detectable due to detector limitations, partial component size, malfunctioning equipment and/or the type of food product undergoing processing. Scouring pad not X-ray detectable.
- ITW Pro Brands recommends that all components be tested prior to implementation (separately and included in the processed food product) and/or consult your specific metal detector equipment manufacturer directly.
- Product shelf life, warranty, and material safety data sheets are available at [www.lpslabs.com](http://www.lpslabs.com). ITW Pro Brands is not responsible for use of this product inconsistent with its instructions and warnings.
- ITW Pro Brands is not responsible for failure to detect components due to detector limitations and/or detector malfunctions. Refer to the metal detector manufacturer's design limitations, instructions, and warnings regarding the use, limitations, and proper maintenance of the equipment.